

Internet

Quick Install Guide



Overview

A Internet Modem Setup



What's in the Modem box?



Modem



Power Supply



Ethernet Cable
(not used)



Stand



Coax Cable



NOTE

These items will be located inside the shipping box.

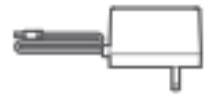
B Wi-Fi Router Setup



What's in the Router box?



Wi-Fi Router



Power Supply



Ethernet Cable



NOTE

Use the Ethernet cable supplied with the router for best performance.

A Internet Modem Setup

1 Locate the coax jack with Internet access



Possible Locations

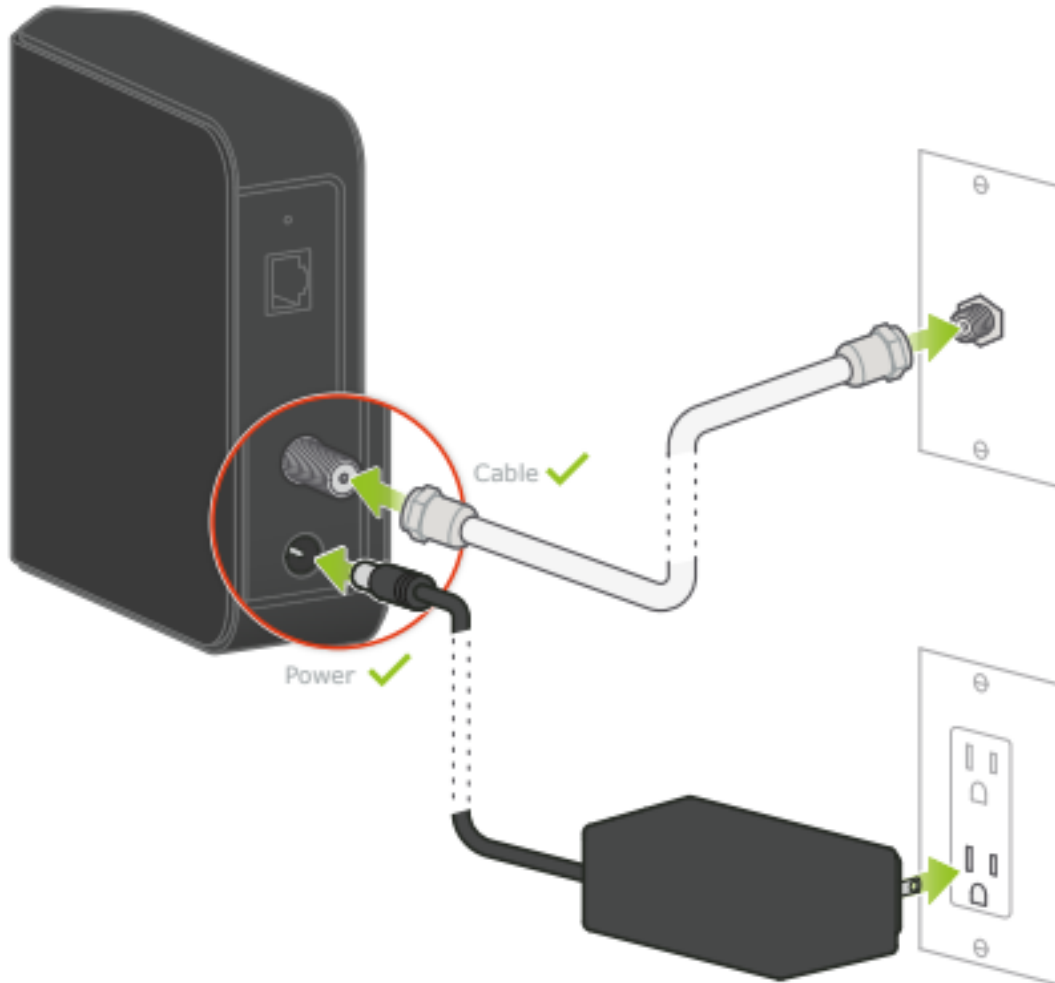


Unable to find it?

✘ If you need help locating your coax cable jack, please go to altimatel.com/support for additional support and information.

2

Connect coax cable and power supply



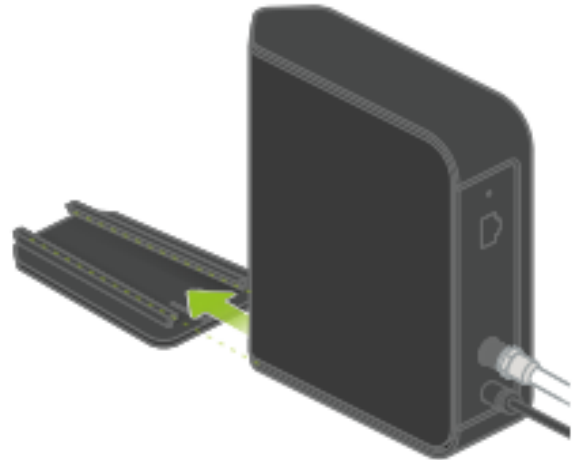
3

Booting up Modem



4

Slide modem into stand

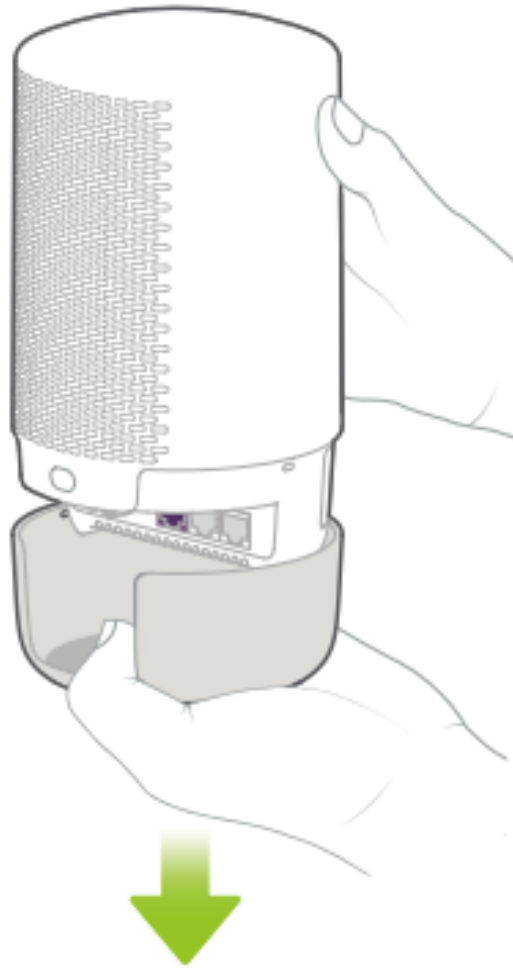


NOTE

Stand installed with the coax and power port at the bottom.

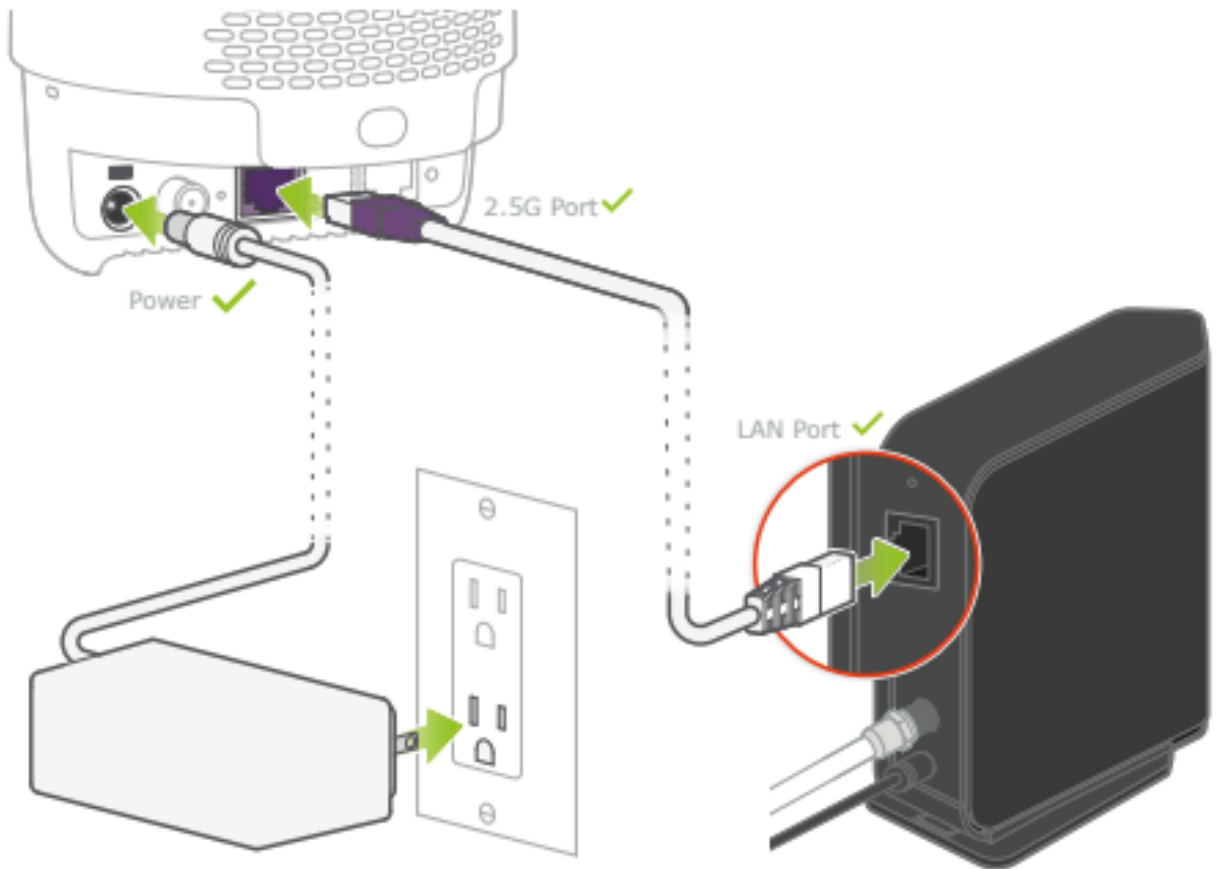
B Wi-Fi Router Setup

5 Remove Wi-Fi Router base



6

Connect power supply and Ethernet cable to Wi-Fi Router



7 Booting up Wi-Fi Router



2-5 minutes

Solid



Flashing



Flashing



Solid



8 Connect your devices



Not working

Non fonctionnel

Update in progress

Mise à jour en cours

Wi-Fi Network

TELUSXXXX

Réseau Wi-Fi

Wi-Fi Password

XXXXXXXXXXXX

Mot de passe Wi-Fi

Admin Password

XXXXXXXXXX

Mot de passe Admin

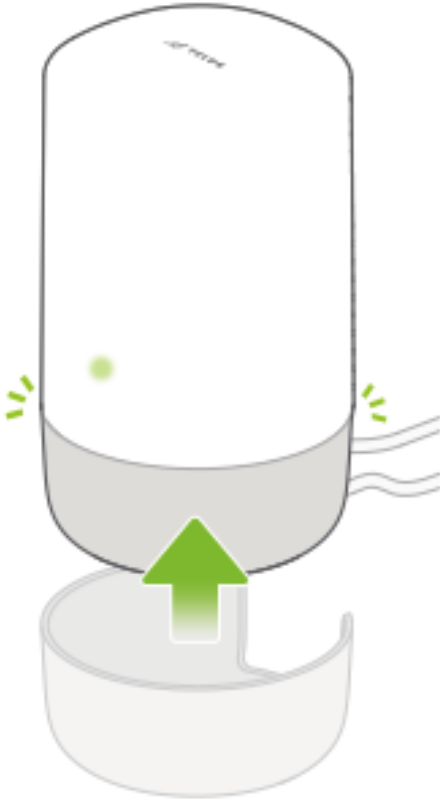


NOTE

This is the default login information.

9

Nice work, you're all done!



Running into issues with your activation?

Contact our team of customer service experts to help you.



altimatel.com/support



ecare@altimatel.com



1-866-810-7940